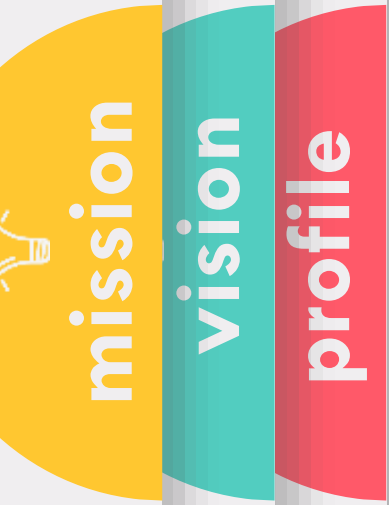




Data Science Center  
Lembaga Sains Terapan  
FMIPA UI



# Introduction



SK Ketua UKK Nomor: 352/UN2.F3.UKK.K1/SDM.0002/2018  
on December 3<sup>rd</sup> , 2018



Pertamina Multidisciplinary Lab Building, 6th Floor Room  
606, FMIPA Universitas Indonesia



081218189985



dsc.ui.ac.id



dsc.lst.ui

mission

vision



profile

# Vision

To be the center of excellence and business incubation in the fields of data science, advanced computing, and big data analytics in Indonesia.

mission



vision

profile

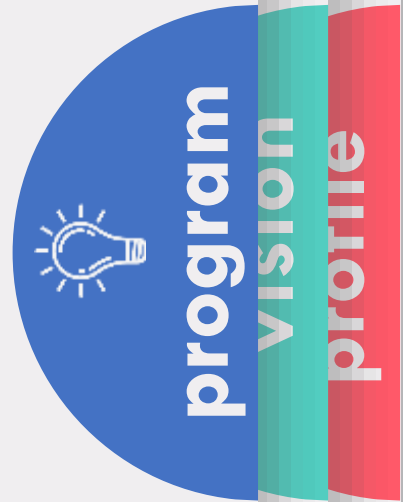
# Mission

1. Develop novel methods and applications in the fields of data science, advanced computing, and big data analytics in support of the Indonesia Tri Darma Perguruan Tinggi, and the progress of the development of Indonesia.
2. Provides course services, certified training, and professional programs related to data science, advanced computing, and big data analytics to support the improvement of the quality of Indonesia human resources towards the industrial revolution era 4.0.
3. Providing consulting services, analysis, and data processing management in general and specifically related to big data analytics and advanced computing.
4. Establish cooperation with government agencies, private and industry related to data and information technology in general in order to realize the acceleration of the development, utilization, and processing of data.
5. To be one of the centers of excellence for data science development and research, and a business incubation center for start-up in the fields of data science, advanced computing, and big data analytics.



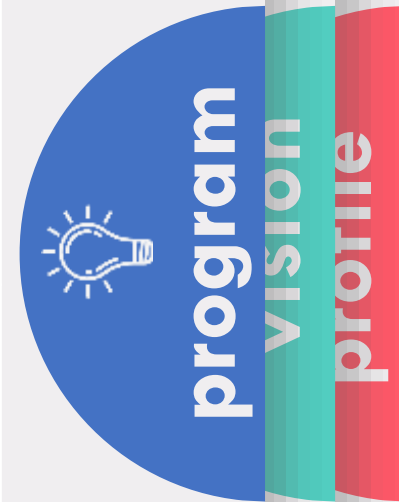
# Programs

No	Program Policies	Activities
1	<b>Education</b>	<ul style="list-style-type: none"><li>a) Conducts additional teaching related to data processing and advanced programming for the academic community, industry, and the general public.</li><li>b) Develop institutional cooperation to improve the quality of human resources, both at the local, national, and international levels related to the fields of science data, advanced programming, and big data.</li><li>c) Organize National and International Seminars / Workshops related to data science, advanced programming, and big data analytics.</li></ul>



# Programs

No	Program Policies	Activities
2	<b>Research and Development</b>	<ul style="list-style-type: none"><li>a) Conducts collaborative consultations on research data analysis with lecturers/lecturers from the Universitas Indonesia internals as well as universities and other institutions outside Universitas Indonesia.</li><li>b) Development of scientific and technological data science, advanced programming, and big data.</li></ul>
3	<b>Business Incubation and Community Services</b>	<ul style="list-style-type: none"><li>a) Conduct training related to data processing and advanced programming for the academic community, industry, and the general public.</li><li>b) Provides in-house training services for stakeholders (industry) related to science data, advanced programming, and big data analytics.</li><li>c) Carry out collaborations with businesses and industry to build start-up in the fields of data science, advanced computing, and big data analytics.</li></ul>



# Services



# Data Science Programming



## Fundamental Of DATA SCIENCE Programming

By Data Science Center

Gedung Lab Multidisiplin Pertamina  
PMPA Universitas Indonesia  
Depok



### Batch 1

Saturday, November 02<sup>th</sup> 2019  
at 09.00 - 16.00 WIB

Topics  
Room 1 : Python Basic  
Room 2 : C Language Basic



Saturday, November 23<sup>th</sup> 2019  
at 09.00 - 16.00 WIB

Topics  
Room 1 : SQL  
Room 2 : CUDA & PyCUDA



Saturday, November 16<sup>th</sup> 2019  
at 09.00 - 16.00 WIB

Topics  
Room 1 : R Studio Basic  
Room 2 : Java Language Basic



Saturday, November 30<sup>th</sup> 2019  
at 09.00 - 16.00 WIB

Topics  
Room 1 : Knime  
Room 2 : Keras, PyTorch



#### Registration

link : [bit.ly/datascienceprogramming](http://bit.ly/datascienceprogramming)

Get Certificate  
lunch  
Coffee Break

#### Contact Us

[dsc@ui.ac.id](mailto:dsc@ui.ac.id) +62 812 888 9995

[dsc.ui.ac.id](http://dsc.ui.ac.id) [dsc.ui.ac.id](https://www.facebook.com/dsc.ui.ac.id) [dsc\\_ui](https://twitter.com/dsc_ui) [dsc\\_ui](https://www.instagram.com/dsc_ui) [dsc.ui.ac](https://www.linkedin.com/company/dsc-ui)

# Data Science Course

## Course Packages

Packages	Capacity	Price*	Meetings
Standard Private	1-3 Person		5 x
	4-6 Person		5 x
Advanced Private	1-3 Person		5 x
	4-6 Person		5 x
Standard Intensive	10-15 Person		2 x
Advanced Intensive	10-15 Person		2 x
In House		Refer to Data Science Training ( <a href="https://www.dsc.ui.ac.id/data-science-training/">https://www.dsc.ui.ac.id/data-science-training/</a> )	

(\*) contact us via WA  
Admin : 081218189985



Data science Center LST FMIPA UI (DSC) has various training for data science. Here, we offer our Python Training program to your company to develop and strengthen the human resources skills in data science.



Currently, we have two series of Python Training. First, the series with code PT1XX. These series aim to train your employees to understand and applying the life cycle of data science using Python. Next, the series with code PT2XX. These series teach your employees to implement the Machine Learning/Deep Learning concepts for specific fields using Python. We have two training in PT2XX, but we will add more. Please visit our website regularly to see updates in this series (<https://www.dsc.ui.ac.id/>).

You can follow the sequence of our training from PT101 to PT110 consecutively, or you can choose randomly, which are suitable for your company. PT201 and PT202 have prerequisites knowledge and skills from the PT1XX series, although you can freely decide if you think that the prerequisites are not necessary.

### **Why is the training in series?**

You might ask a question like that, right! Because data science is a science, it consists of four main sciences, such as mathematics, statistics, computer science, and science in domain expertise. In this training, we eager to gain knowledge and skills in data science comprehensively in those areas of sciences when delivering the materials to your employees.

[Our Syllabus](#)



# Data Science Weekend



# Last Events



# Good Data Good Business

Activity Video



## WORKSHOP

# GOOD DATA – GOOD BUSINESS

HOW DATA (IS/IT) CONTRIBUTES TO SHAPE THE BUSINESS AT LEVEL OF EXCELLENCE

FRIDAY - SATURDAY, 12 - 13 APRIL 2019  
09.00 - 16.00 WIB  
Gedung Lab Multidisiplin Pertamina FMIPA UI  
Depok, Jawa Barat

**TRAINER:**  
**WAWAN MARYANTO**  
Business Excellence Lead at PT Bourjoio, Unilever  
Jabodetabek, Indonesia



### HOW WE RUN THE WORKSHOP

The workshop will need 2 full days as usual business hour, day-1 will mainly to expose the introduction of business processes while day-2 will focus on how the students can add value to from the point of view as students and followed by case studies to work to ensure a useful take away from the workshop.

### WORKSHOP OUTLINES:

**DAY 1:**

1. Intro to Business
  - Pre-Test (This is to understand level on business of participants)
  - Business Functions (Marketing, Sales, Finance, HR, Supply Chain, IT)
  - Cash Flow, Information Flow, Material Flow
2. How Information System supports the business (IT Governance)
  - Investment & Capability
  - ERP (Visibility, Standardization, Role & Responsibility)
3. Business Excellence: How IS/IT becomes a factor of business excellence
  - Planning & Feedback (Standard vs Actual)
  - Implementation & Sustainability (Project Management & Change Management)
  - Performance Management & Continuous Improvement (KPI & Challenge)

**DAY 2:**

1. Business Streams/Scope of assignments from ERP Perspective
  - Order to Cash
  - Planning To Produce
  - Procure To Pay
2. Data Management
  - Data is asset (correctness and completeness)
  - Data Source (Manual, Device - sensor)
  - Master Data Concept (Product/SKU, Customer, Vendor, Employee)
  - Data Owner Concept (Who is in charge to provide the Data Fields as per Business Functions)
3. Where Mathematics can add value
4. Introduction to Industry 4.0
  - Factory System to ERP (System Integration)
  - Physical to Digital, Digital to Digital, Digital to Physical
5. Case Study
  - Planning Area - How to control the performance of planning (what KPI, Where to get the data, How to update the KPI)
  - Production Area - How to control the performance of Production Area (what KPI, Where to get the data, How to update the KPI)
  - Finance Area - How to control the performance of Finance (what KPI, Where to get the data, How to update the KPI)
  - Sales Area - How to control the performance of Sales (what KPI, Where to get the data, How to update the KPI)
6. Post-test & Certification

**INVESTMENT**  
IDR 1.250.000 / General Participant  
IDR 500.000 / UI Students Participant  
IDR 750.000 / Non UI Students Participant

**Include:**  
Seminar Kit, Certificate,  
Lunch, Coffee Break

**REGISTRATION:**  
[bit.ly/GoodData-GoodBusiness](https://bit.ly/GoodData-GoodBusiness)

**CONTACT PERSON:**  
**WHATSAPP:**  
Sekretariat DSC  
+62 812 1818 9985

**CONTACT PERSON:**  
www.maih.ui.ac.id/dsc  
dsc@sci.ui.ac.id

**CONTACT PERSON:**  
@ dsc.lst.ui  
dsc.lst.ui  
dsc\_lst\_ui

# AI SERIES IN BIOINFORMATICS 2019

"Bioinformatics is the science of storing, retrieving, and analysing large amounts of biological information. It is a highly interdisciplinary field involving many different types of specialist, including biologist, life scientist, computer science, and mathematicians"

## VENUE :

Department of Mathematics, FMIPA Universitas Indonesia

## REGISTRATION FEE :

Students : IDR 550.000

Academics : IDR 1.050.000

Corporate : IDR 1.500.000

## WHO SHOULD ATTEND :

Students (Diploma, Undergraduate or Postgraduate)

Academics (Lecturers/Researchers)

Industry Partners and Professionals Supporting Biologist

## REGISTER AT :

[bit.ly/AISeriesinBioinformatics2019](http://bit.ly/AISeriesinBioinformatics2019)

## TOPICS WILL INCLUDE :

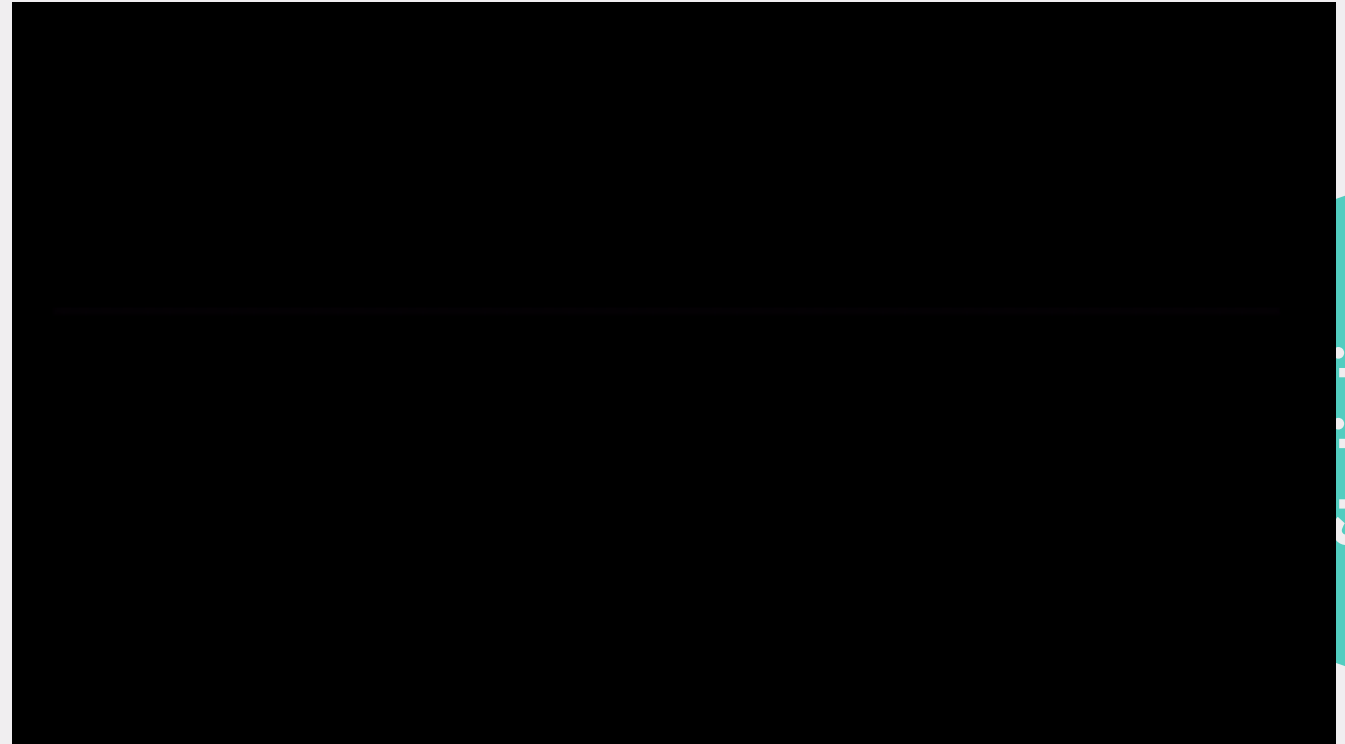
1. Implementation of R/Phyton Program for Bioinformatics
2. Clustering in Microarray, Sequence, and Protein-Protein Interaction Data
3. Image Processing in Medical Image
4. Machine Learning in Bioinformatics and Biomedical Imaging
5. Statistical Analysis in Bioinformatics and Biomedical Informatics
6. Implementation of Parallel Computing in Bioinformatics

## TIMELINE :



## CONTACT US AT :

# AI Series in Bioinformatics 2019



Activity Video

# Data Visualization

**DSC** Data Science Center

# DATA VISUALIZATION

**FREE** for All Participant

**Keynote Speaker**  
**Risman Adnan**  
Director of Software - Samsung R&D Indonesia (SRRI)

**This session you will learn about :**

- Fundamental of data visualization
- Common frameworks for data scientist
- How to implement visualization dashboard

**Limited seat !!!**  
**Only for 30 participant**

**SATURDAY, 13 JULY 2019**  
**10.00 - 12.00 WIB**  
**GEDUNG LAB MULTIDISIPLIN PERTAMINA FMIPA UI, DEPOK**

**Participants :**

- Students
- Data Scientists

**NOTE :** PLEASE BRING YOUR LAPTOP

**Registration link :**  
[bit.ly/DSC-DataVisualization](http://bit.ly/DSC-DataVisualization)

THIS EVENT SUPPORTED BY **SAMSUNG**

**CONTACT US**

Instagram: [dsc.lst.ui](https://www.instagram.com/dsc.lst.ui)  
Facebook: [dsc.lst.ui](https://www.facebook.com/dsc.lst.ui)  
Twitter: [dsc\\_lst\\_ui](https://twitter.com/dsc_lst_ui)

+62 812 1818 9985  
[www.math.ui.ac.id/dsc](http://www.math.ui.ac.id/dsc)  
[dsc@sci.ui.ac.id](mailto:dsc@sci.ui.ac.id)

Activity Video

# EXPLORATORY DATA ANALYSIS

**FREE** For All Participant

**Topic include :**

- Fundamentals of EDA
- Statistical Summary of Data
- Statistical Hypothesis Testing
- Dimensionality Reduction



**Keynote Speaker**  
**Risman Adnan**  
Director of Software - Samsung R&D Indonesia (SRRI)

**SATURDAY, 27 JULY 2019**  
**10.00 - 12.00 WIB**  
GEDUNG LAB MULTIDISIPLIN PERTAMINA FMIPA UI, DEPOK

- Participants :**
- Students
  - Data Scientists

**NOTE : PLEASE BRING YOUR LAPTOP**

**Registration link :**  
[bit.ly/DSC-ExploratoryDataAnalysis](http://bit.ly/DSC-ExploratoryDataAnalysis)

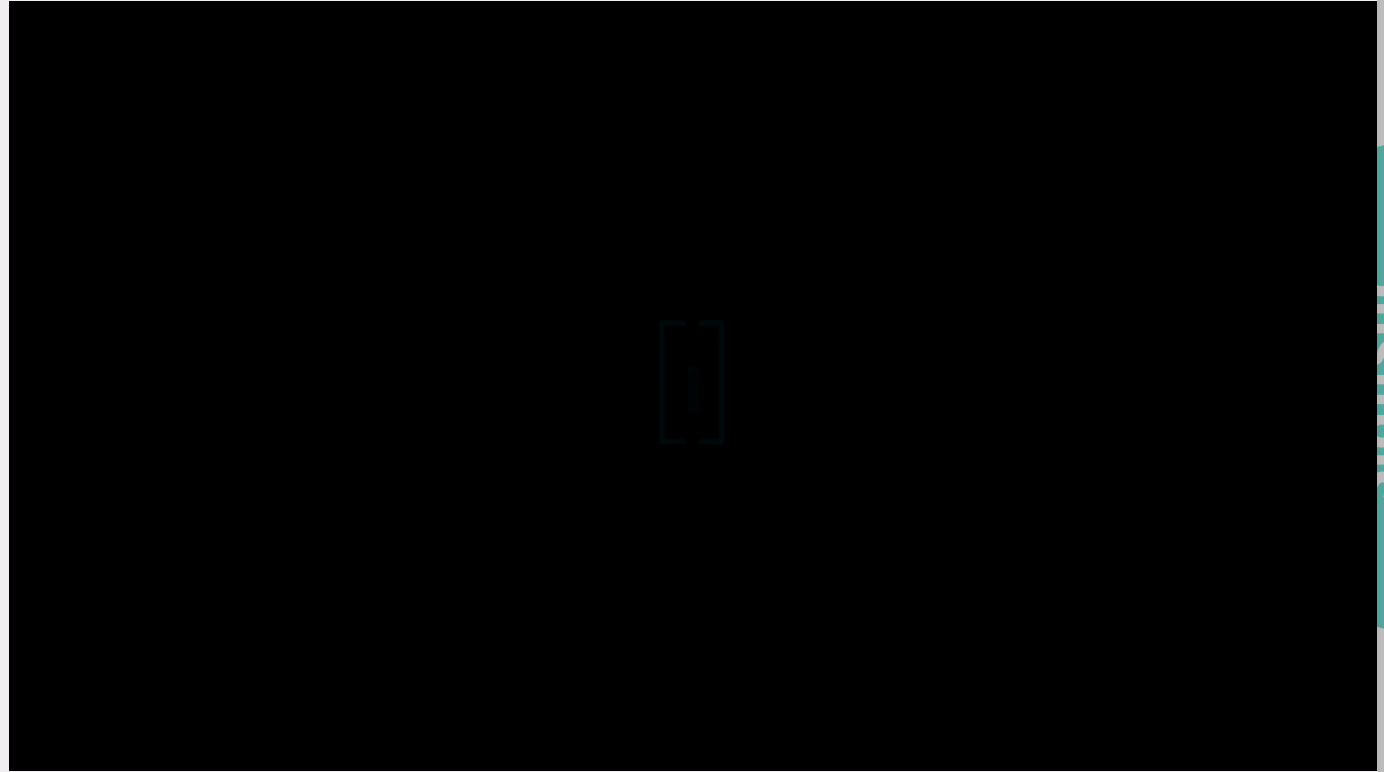


dsc.lst.ui  
 dsc.lst.ui  
 dsc\_lst\_ui

**CONTACT US**

+62 812 1818 9985  
 [www.math.ui.ac.id/dsc](http://www.math.ui.ac.id/dsc)  
 [dsc@sci.ui.ac.id](mailto:dsc@sci.ui.ac.id)

# Exploratory Data Analysis



Activity Video

# Data Science School



**DATA SCIENCE SCHOOL**  
(Software Algorithm, Data Intelligence, and Artificial Intelligence)

This Data Science School will be divided into three tracks, namely software algorithm track (SWE Role), data intelligence track (DE & DS Roles), and artificial intelligence track (AIE Role). SWE Role provides a solid conceptual understanding and practical skills for software development covering common data structures and algorithms. DE & DS Roles provide a fundamental and conceptual understanding of learning from data and practical skills on common machine learning models. AIE Role provides a fundamental and conceptual understanding of neural networks and various deep learning architectures for vision, speech, and NLU. The participants may choose either one of them or take all of them. The course would combine the interactive lecturing and the hands-on session using ANSI C, and Python.

**In addition, there will be a hiring session from our partners.**

**Schedule:**  
Track 1: Wed, 18<sup>th</sup> Sept until Fri, 20<sup>th</sup> Sept 2019  
Track 2: Thu, 26<sup>th</sup> Sept until Sat, 28<sup>th</sup> Sept 2019  
Track 3: Thu, 3<sup>rd</sup> Oct until Sat, 5<sup>th</sup> Oct 2019

**Program Syllabus:**

Track 1	Track 2	Track 3
<b>Software Algorithm</b> <ul style="list-style-type: none"><li>Algorithm &amp; Data Structure<ul style="list-style-type: none"><li>Sorting &amp; Searching</li><li>Graph Data Structure</li><li>Graph Traversal Algorithm</li><li>Weighted Graph Data Structure</li><li>Minimum Spanning Tree</li></ul></li><li>Practical</li></ul>	<b>Data Intelligence</b> <ul style="list-style-type: none"><li>Data Visualization</li><li>Exploratory Data Analysis<ul style="list-style-type: none"><li>Linear Models</li></ul></li><li>Classification &amp; Regression</li><li>Support Vector Machine</li><li>Decision Tree Models</li></ul> <li>Practical</li>	<b>Artificial Intelligence</b> <ul style="list-style-type: none"><li>Perceptron &amp; Neural Networks<ul style="list-style-type: none"><li>Deep Feed Forward Neural Networks</li></ul></li><li>Convolutional Neural Networks</li><li>CNNs for Computer Vision</li><li>Recurrent Neural Networks</li><li>RNNs for ASR and NLU</li></ul>

**Register at:** [bit.ly/DataScienceSchool2019](http://bit.ly/DataScienceSchool2019)

Registration fee:  
- FMIPA UI's Student : IDR 250.000 / track  
- Non FMIPA UI's Student : IDR 500.000 / track  
- Non UI's Student : IDR 750.000 / track  
- Public : IDR 2.000.000 / track

Venue: Gedung Lab Riset Multidisiplin Pertamina  
FMIPA Universitas Indonesia, Depok

Supported by:  
LANSUM, BOSNET, glair, Konvergen AI

**CONTACT US**  
www.math.ui.ac.id/dsc  
+62 812 1818 9985  
dsc@sci.ui.ac.id  
dsc.lst.ui  
dsc.lst.ui  
dsc\_lst\_ui

**Limited Seats Only**

**Include Hiring Session from Our Partners**

Activity Video

# Seminar and Workshop Data Visualization

With Yellowfin

Keynote Speaker:



Bey Arief Budiman  
Head of Delivery - Absolut Data Indonesia

**Topic Include:**

- Introduction to Data Analyst
- Data Exploration, Visualization and Introductory Content Creation

Saturday, September 21<sup>st</sup>, 2019

09.00 – 16.00 WIB

**Register at:**

[bit.ly/DSC-DVwithYellowfin](https://bit.ly/DSC-DVwithYellowfin)

**Free for All Participant**

**Participant:**

- Student
- Public

**Note:** Please bring your laptop

**Location:** Gedung Lab Multidisiplin Pertamina  
FMIPA Universitas Indonesia, Depok

[dsc\\_list\\_ui](https://www.instagram.com/dsc_list_ui)

[dsc@sci.ui.ac.id](mailto:dsc@sci.ui.ac.id)

+62 812 1818 9985

[www.math.ui.ac.id/dsc](http://www.math.ui.ac.id/dsc)

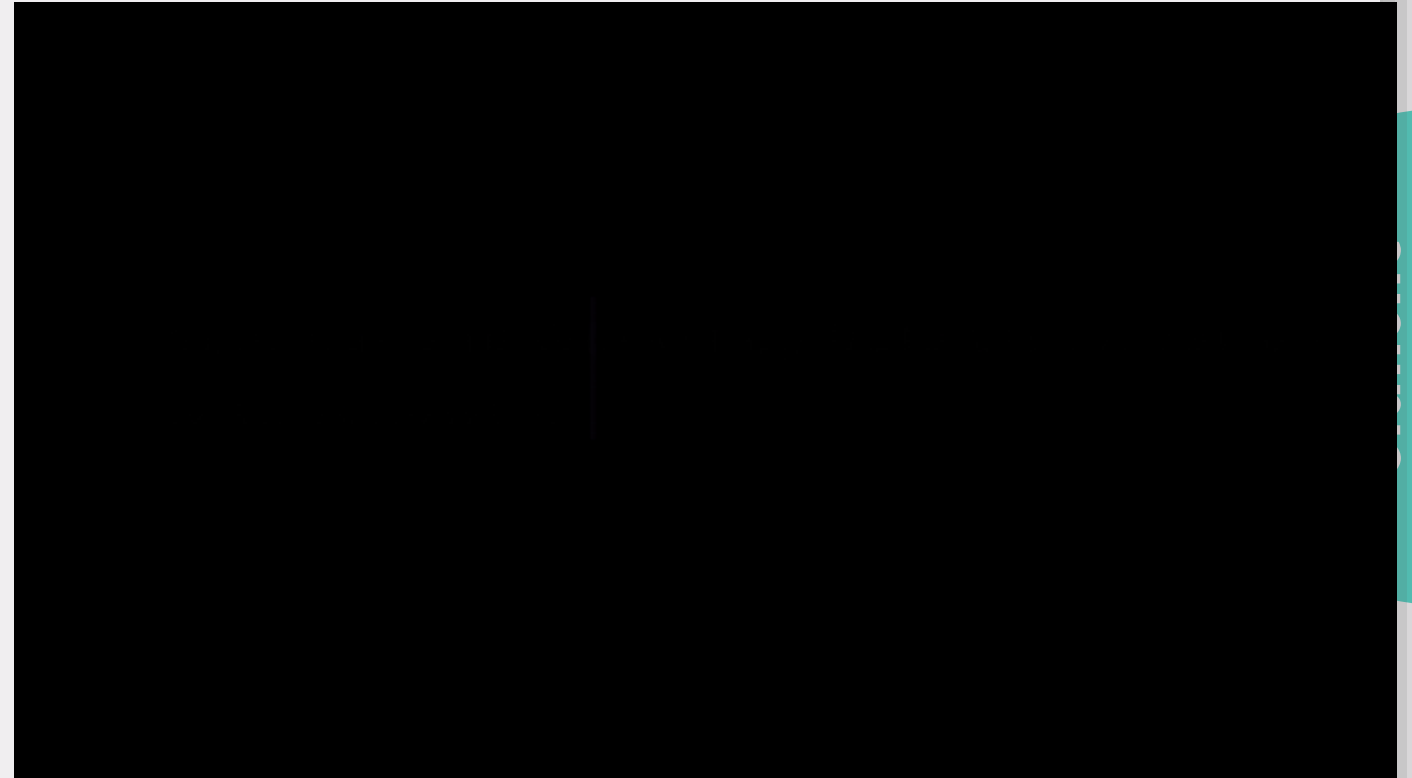
[dsc\\_list\\_ui](https://www.facebook.com/dsc_list_ui)

[dsc\\_list\\_ui](https://www.youtube.com/channel/UC...)

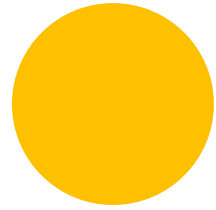
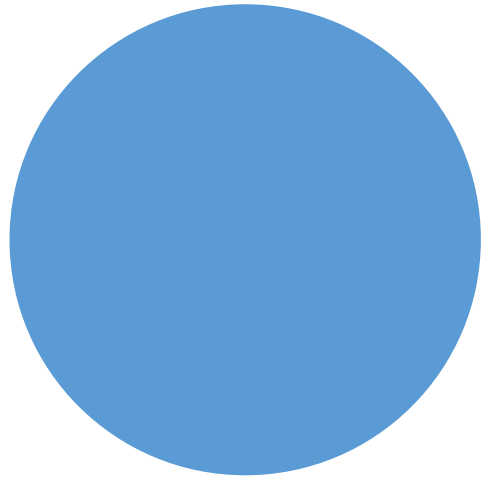
This event supported by:



# Seminar and Workshop Data Visualization



Activity Video



# Upcoming Events



# Weekend Course on Data Science Batch 1 Generative Adversarial Networks In-Depth

- PARTICIPANTS :**  
DATA SCIENTISTS, AI ENGINEERS AND RESEARCHERS (MAX 30)
- PRICES :**  
PROFESSIONAL IDR 5,000,000  
STUDENTS IDR 1,000,000  
(FMIPA UI STUDENTS DISC. 25%)
- DURATION :**  
4 WEEKS (EVERY SATURDAY  
09.00 - 16.00)
- METHOD :**  
FUNDAMENTAL, CONCEPTUAL  
AND PRACTICAL APPROACHES
- INVITED SPEAKER :**  
RISMAN ADNAN, SAMSUNG  
R&D INSTITUTE INDONESIA

GENERATIVE MODELS LIKE GANS BECOME HOT TOPIC IN DEEP LEARNING TECHNOLOGY WITH VARIOUS INDUSTRIAL USE CASES ON VISION, SPEECH AND TEXT GENERATIONS.

IN THIS WEEKEND COURSE, WE WILL COVER FUNDAMENTAL AND CONCEPTUAL UNDERSTANDING OF GANS AND EQUIP PARTICIPANTS WITH PRACTICAL SKILLS TO TRAIN IMAGE, TEXT AND VIDEO DATASETS WITH STATE OF ART GAN MODELS.

Register Here  
[bit.ly/DSCWeekendCourse1](https://bit.ly/DSCWeekendCourse1)

- WEEK 1 FUNDAMENTAL OF GENERATIVE ADVERSARIAL
- WEEK 2 MINIMAX AND WASSERSTEIN GAN FORMULATIONS
- WEEK 3 VARIOUS GAN EVALUATION METHODS
- WEEK 4 TRAINING STABLE GANS FOR IMAGE, TEXT AND VIDEO DATASET

Course Materials:

Lecture Slides

Home Work Problems

Reusable PyTorch Codes

Included: Certificate and Lunch



# Weekend Course on Data Science Batch 1 Season II Machine Learning with Kernels



**Invited Speaker**  
**Risman Adnan**  
 Director of Software R&D  
 Samsung R&D Institute Indonesia

- Course Materials
- Lecture Slides
- Reusable PyTorch Codes
- Home Work Problems

Kernel-based models are widely used machine learning technique for both discriminative and generative tasks. In this course, we will introduce the Reproducible Kernel Hilbert Space (RKHS) as a key concept to understand and implement various kernel-based models. Based on RKHS understanding, we will show how to use it for various machine learning discriminative tasks. We will also introduce the concept of Maximum Mean Discrepancy to train Generative Adversarial Networks.

- Week 1: Introduction to Machine Learning with Kernels
- Week 2: Reproducible Kernel Hilbert Space in Machine Learning
- Week 3: Represent and Compare Probabilities with Kernels
- Week 4: MMD for Training Generative Adversarial Networks

<b>Method</b> Fundamental, Conceptual and Practical Approaches	<b>Duration</b> 4 Weeks (Saturday 09:00 - 16:00)	<b>Prices</b> Professional IDR 5,000,000 Students IDR 1,000,000 (FMIPA UI students disc. 25%)	<b>Participants</b> Data Scientists, AI Engineers and Researchers (Max 30)
---	---	--	---



 Data Science Center  
 Lembaga Sains Terapan FMIPA Universitas Indonesia


 FAKULTAS MATEMATIKA DAN ILMU PENGETAHUAN ALAM

# SAMPLING METHOD AND DATA ANALYSIS WITH R FOR RESEARCHER

**TOPIC INCLUDE**

- Sampling Method
- The Rule of Data Analytics
- Data Analysis in R

**FREE** for All Participants

**SCHEDULE**  
Friday, November 1<sup>st</sup>, 2019

**TIME**  
09.00-11.30 WIB

**VENUE**  
Gedung Lab Multidisiplin Pertamina FMIPA Universitas Indonesia, Depok

**PARTICIPANT**

- Student
- Researcher
- Lecturer

**KEYNOTE SPEAKER**



**Hengki Muradi, M.Si, (Ph.D Cand.)**  
Lead of Big Data Analytic in Data Science Center LST FMIPA UI

**LINK REGISTRATION:**  
[bit.ly/DSCSamplingMethod](http://bit.ly/DSCSamplingMethod)

**CONTACT US**

- +62 812 1010 9985
- [www.dsc.ui.ac.id](http://www.dsc.ui.ac.id)
- [dsc@sci.ui.ac.id](mailto:dsc@sci.ui.ac.id)
- [dsc.ui.ac.id](https://www.facebook.com/dsc.ui.ac.id)
- [dsc.ui.ac.id](https://www.instagram.com/dsc.ui.ac.id)
- [dsc\\_ui\\_ac\\_id](https://www.youtube.com/channel/UC...)



 Data Science Center  
 Lembaga Sains Terapan FMIPA Universitas Indonesia


 FAKULTAS MATEMATIKA DAN ILMU PENGETAHUAN ALAM

# WORKSHOP

## The Fundamental Sampling Method and Data Analysis using R for Researcher

**KEYNOTE SPEAKER**



**Hengki Muradi, M.Si, (Ph.D Cand.)**  
Lead of Big Data Analytic in Data Science Center LST FMIPA UI

**SCHEDULE**  
Monday, November 18<sup>th</sup>, 2019 until Tuesday, November 19<sup>th</sup>, 2019

**TIME**  
09.00-16.00 WIB

**VENUE**  
Gedung Lab Multidisiplin Pertamina FMIPA Universitas Indonesia, Depok

**PARTICIPANT**

- Student
- Researcher
- Lecturer

**TOPICS INCLUDE**

**DAY 1**

- Sampling Method
- Research Instrument
- Validity and Reliability Test
- Study Case

**DAY 2**

- Parametric
- Non-Parametric
- Study Case

**REGISTRATION FEE**

- » Student: IDR 100.000
- » Lecturer/Researcher: IDR 500.000

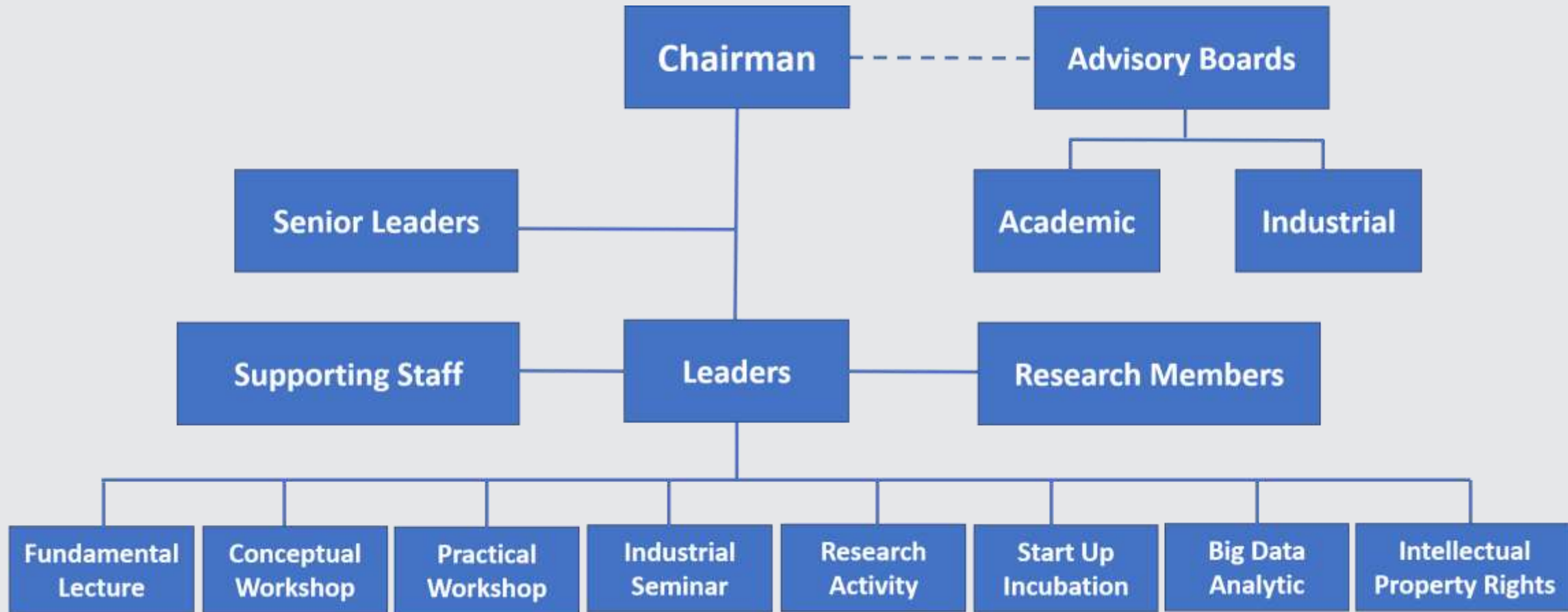
**LINK REGISTRATION:**  
[bit.ly/Workshop\\_FundamentalSamplingMethod](http://bit.ly/Workshop_FundamentalSamplingMethod)

**CONTACT US**

- +62 812 1010 9985
- [www.dsc.ui.ac.id](http://www.dsc.ui.ac.id)
- [dsc@sci.ui.ac.id](mailto:dsc@sci.ui.ac.id)
- [dsc.ui.ac.id](https://www.facebook.com/dsc.ui.ac.id)
- [dsc.ui.ac.id](https://www.instagram.com/dsc.ui.ac.id)
- [dsc\\_ui\\_ac\\_id](https://www.youtube.com/channel/UC...)

# Organization Structure

# Organizational Structure



# Research Activity

Bustamam, Alhadi

Universitas Indonesia, Depok, Indonesia

Author ID:36815737800

## Chairman



Associate Professor Alhadi  
Bustamam, S.Si., M.Kom., Ph.D.

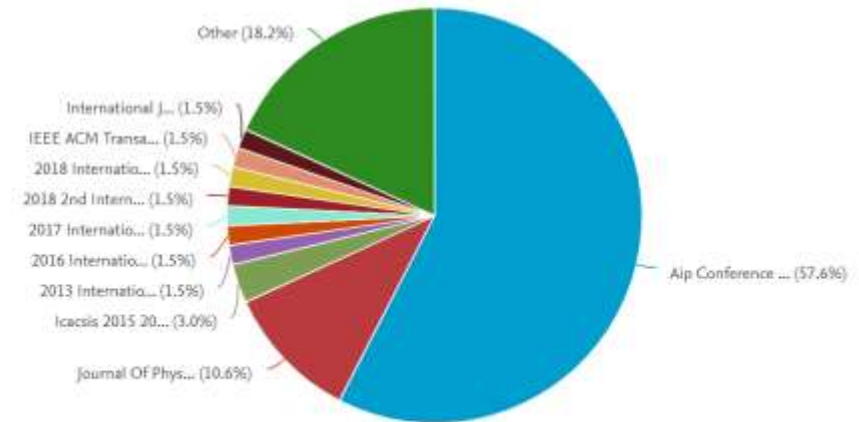
bioinformatics  
advanced computing

alhadi@sci.ui.ac.id

Source ↓	Documents ↑
IEEE ACM Transactions On Computational Biology And Bioinformatics	1
International Journal Of Advances In Soft Computing And Its Applications	1
International Journal Of Technology	1
Iop Conference Series Earth And Environmental Science	1
Journal Of Applied Mathematics	1

### Documents by source

66



### Documents by author

66

Analyze author output

### Total citations

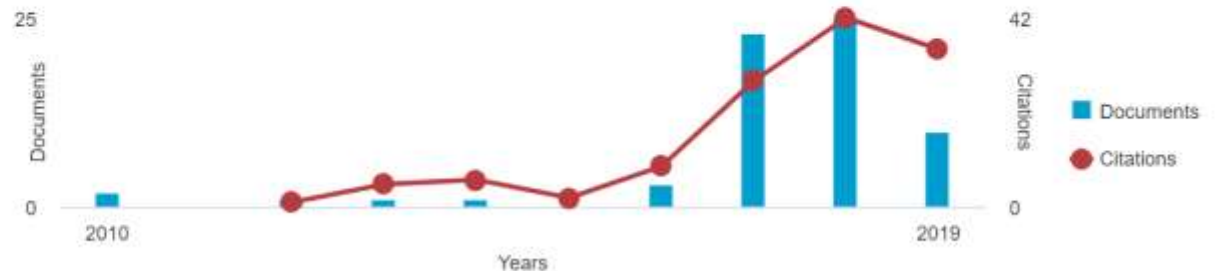
131 by 99 documents

View citation overview

### h-index: 7

View h-graph

### Document and citation trends:



- Current Grants :
- MIT-Indonesian Research Alliance (MIRA)
  - PDUPT, QQ, PITTA-A, PITTA-B



# Academic Advisors



Prof. Mohammad Asif Khan, Ph.D

SCHOOL OF DATA SCIENCES - PERDANA  
UNIVERSITY, MALAYSIA

[dsif@i2r.a-star.edu.sg](mailto:dsif@i2r.a-star.edu.sg)



Prof. Dr. rer. nat. Abdul Haris

DEAN OF MATHEMATICS AND SCIENCE FACULTY  
UNIVERSITAS INDONESIA

[aharis@sci.ui.ac.id](mailto:aharis@sci.ui.ac.id)



Academic  
Chairman

# Academic Advisors



Prof. Dr. dr. Budi Wiweko, SpOG(K), MPH  
VICE DIRECTOR INNOVATION AND BUSINESS DEVELOPMENT

budi.wiweko01@ui.ac.id



Prof. Dr. Arry Yanuar, M.Si., Apt.  
BIOMEDICAL COMPUTING LABORATORY

arry.yanuar@ui.ac.id



Academic  
Chairman

# Academic Advisors



Kholis Abdurachim Audah, Ph.D

CHAIRMAN, INDONESIA SOCIETY OF BIOINFORMATICS AND  
BIODIVERSITY

[kholis.audah@sgu.ac.id](mailto:kholis.audah@sgu.ac.id)



Dr. tech. Djoko Triyono

NANO MATERIAL PHYSICS, UNIVERSITAS INDONESIA

[djoko.triyono@sci.ui.ac.id](mailto:djoko.triyono@sci.ui.ac.id)



Academic  
Chairman

# Academic Advisors



Dr. Dede Djuhana

COMPUTATIONAL PHYSICS, UNIVERSITAS INDONESIA

[dede.djuhana@sci.ui.ac.id](mailto:dede.djuhana@sci.ui.ac.id)



Martianus Frederic Ezerman, Ph.D

QUANTUM CRYPTO, SECURITY AND BLOCKCHAIN

[cqtmfe@nus.edu.sg](mailto:cqtmfe@nus.edu.sg)



Academic  
Chairman

# Academic Advisors



Dr. Titin Siswantining, D.E.A.  
BIostatistician, UNIVERSITAS INDONESIA

Geoinformatics  
titin@sci.ui.ac.id



Dr. Baiq Hana Susanti, S.PI, M.Sc  
UMG IDEALAB

baiq.hana@uinjkt.ac.id



Academic  
Chairman

# Academic Advisors



Taufik Edy Sutanto, M.Sc.Tech., Ph.D

FOUNDER TAU-DATA INDONESIA

[taufik.sutanto@uinjkt.ac.id](mailto:taufik.sutanto@uinjkt.ac.id)



Academic  
Chairman

# Industrial Advisors



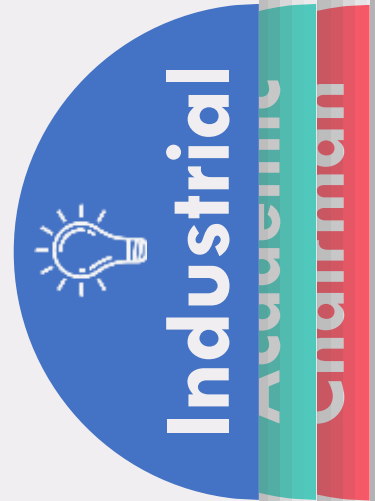
Risman Adnan Mattotoran  
DIRECTOR SAMSUNG R&D INDONESIA

[r.adnan@samsung.com](mailto:r.adnan@samsung.com)



Kiwi Aliwarga  
CEO UMG IDEALAB

[kiwi.aliwarga@umgroups.com](mailto:kiwi.aliwarga@umgroups.com)



# Industrial Advisors



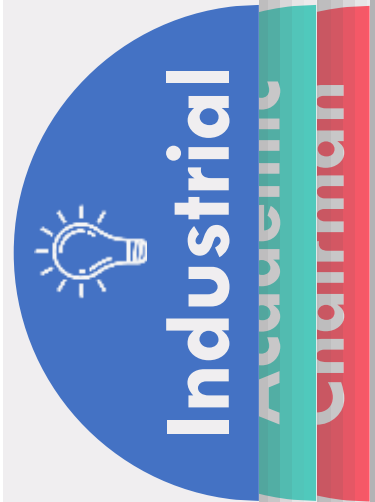
Rinaldi Anwar  
CEO GLOBAL RISK MANAGEMENT

[rinaldi@grm-risk.com](mailto:rinaldi@grm-risk.com)



Sulasmo Sudharno  
CEO AKSARAMAYA

[lasmo@aksaramaya.com](mailto:lasmo@aksaramaya.com)



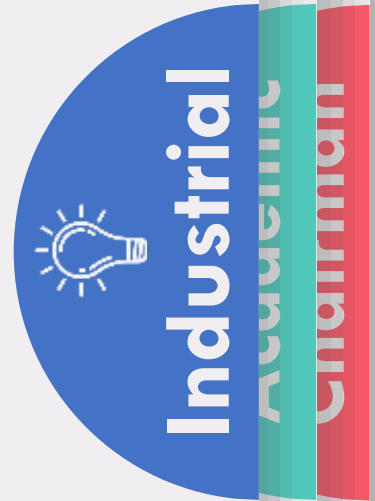
# Industrial Advisors



Wawan Maryanto

HEAD BUSINESS EXCELLENCE

wmaryanto152@gmail.com



contacts

partnership

# About Us

# Partnership



R&D Institute Indonesia



IMERI FKUI  
INDONESIAN MEDICAL EDUCATION AND RESEARCH INSTITUTE  
FACULTY OF MEDICINE UNIVERSITAS INDONESIA



contacts

partnership



**THANK YOU**



Pertamina Multidisciplinary Lab Building, 6th Floor Room  
606, FMIPA Universitas Indonesia

081218189985



[dsc.ui.ac.id](http://dsc.ui.ac.id)

[dsc.lst.ui](https://www.instagram.com/dsc.lst.ui)

